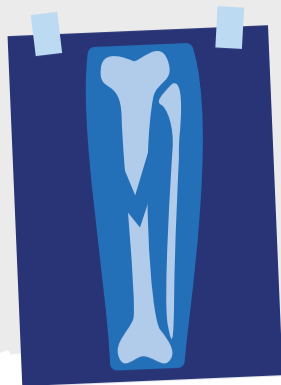


# COVID-19 AND INEQUALITY



Covid-19 has been likened to an **x-ray**, revealing fractures in the fragile skeleton of the societies we have built.

## INCREASE IN POVERTY

Pandemic-induced global 'new poor'



2020 between  
**119** and **124**  
**MILLION**

2021 between  
**143** and **163**  
**MILLION**

Living under **\$1.90** a day

June 2020 - January 2021

**228 MILLION**

Living under **\$3.20** a day

"WORLD BANK"



**INDIA** and  
**NIGERIA**

= highest projected  
number of **new poor**



"OECD"

## INCREASE IN INEQUALITY



The **Gini Coefficient** is a single number aimed at measuring the degree of inequality in a distribution.

**1** = Perfectly  
unequal

**0** = Perfectly  
equal

The **worst historic increases** in the Gini index range from:



just under

**2% per year**

Latin America and the Caribbean

just under

**4%**

South Asia



### COVID-19 Gini index increases

- **> 6%**
- emerging market and developing economies by **more than 6%**
- even larger impact for **low-income countries**.

"WORLD ECONOMIC OUTLOOK"

The **increase in inequality** during past pandemics

--> **1.25%**



**"THE POOR ARE GETTING POORER"**

Gita Gopinath, Chief Economist at the IMF

#### Sources:

How the pandemic is worsening inequality - Financial Times  
The Inequality Virus, Oxfam  
COVID-19 is increasing multiple kinds of inequality. Here's what we can do about it  
How COVID-19 Will Increase Inequality in Emerging Markets and Developing Economies  
Updated estimates of the impact of COVID-19 on global poverty: Looking back at 2020 and the outlook for 2021  
COVID-19, inequality, and gig economy workers  
Poverty and Shared Prosperity 2020: Reversals of Fortune  
Who will Bear the Brunt of Lockdown Policies? Evidence from Tele-workability Measures Across Countries  
World Inequality Report 2018



This project has been undertaken with funding from Irish Aid's WorldWide Global Schools. Irish Aid's WorldWide Global Schools is the national programme for Global Citizenship Education for post primary schools in Ireland. The ideas, opinions and comments in this resource are entirely the responsibility of its authors and do not necessarily represent or reflect WorldWide Global Schools and/or Irish Aid policy.